



Doosan Infracore
Construction Equipment

DX225LL TECHNICAL DATA





GENERAL SPECIFICATIONS

ITEMS		UNIT	STANDARD
ENGINE	MODEL		Doosan DL06
	NUMBER OF CYLINDERS		6
	RATED FLYWHEEL POWER (hp PER SAE J1995) GROSS	hp / rpm	155 / 1,900
		kW / rpm	115 / 1,900
	RATED FLYWHEEL POWER (hp PER SAE J1349) NET	hp / rpm	148 / 1,900
		kW / rpm	110 / 1,900
	MAXIMUM TORQUE (GROSS) (SAE J1995)	ft. lb. / rpm	506 / 1,400
		Nm / rpm	686 / 1,400
	PISTON DISPLACEMENT	in. ³	359
		cc	5,890
	BORE AND STROKE	in. x in.	3.9 x 4.9
mm x mm		100 x 125	
STARTER	V / kW	24 V, 6 kW	
BATTERIES	V / AH	2 x 12 V x 100 AH	
AIR CLEANER		Double element with auto dust evacuation.	
MAIN PUMPS – 2 VARIABLE DISPLACEMENT AXIAL PISTON PUMPS MAX FLOW	US gpm	2 x 58	
	L / min.	2 x 220	
PILOT PUMP (GEAR DESIGN)	MAXIMUM FLOW	US gpm	6.9
		L / min.	26
	RELIEF PRESSURE	psi	569
		bar	39
MAXIMUM SYSTEM PRESSURE	BOOM/ARM/BUCKET (NORMAL MODE)	psi	4,694
		bar	324
	BOOM/ARM/BUCKET (POWER MODE)	psi	4,978
		bar	343
	TRAVEL	psi	4,765
		bar	328
SWING	psi	3,911	
	bar	270	
UNDERCARRIAGE	UPPER ROLLERS		2 each track (STD. Shoes)
	LOWER ROLLERS		9 each track
	NUMBER OF SHOES (LINKS PER SIDE)		48 each track (Double Grouser)
	TOTAL LENGTH OF TRACK	ft. in.	15' 2"
mm		4,613	
ENVIRONMENT	SOUND LEVEL (2000/14/EC)	dB(A)	104
	CABIN SOUND LEVEL (ISO 6396)	dB(A)	73
SWING MECHANISM	SWING SPEED	rpm	0 - 11.7
DRIVE SYSTEM	TRAVEL SPEED (FAST/SLOW)	mph	2.9 / 1.7
		km / h.	4.6 / 2.8
	DRAWBAR PULL	lb.	54,013
		kg	24,500
	MAXIMUM GRADE	%	70
°		35	

DX225LL

ITEMS		UNIT	STANDARD
REFILL CAPACITIES	FUEL TANK	US gal.	272
		L	1,030
	COOLING SYSTEM (RADIATOR CAPACITY)	qt.	25.2
		L	24
	ENGINE OIL	qt.	28.4
		L	27
	SWING DRIVE	qt.	6.3
		L	6
	FINAL DRIVE (EACH SIDE)	qt.	5.8
		L	5.5
	HYDRAULIC SYSTEM	US gal.	52.8
		L	240
	HYDRAULIC TANK	US gal.	37.2
		L	141

WEIGHT

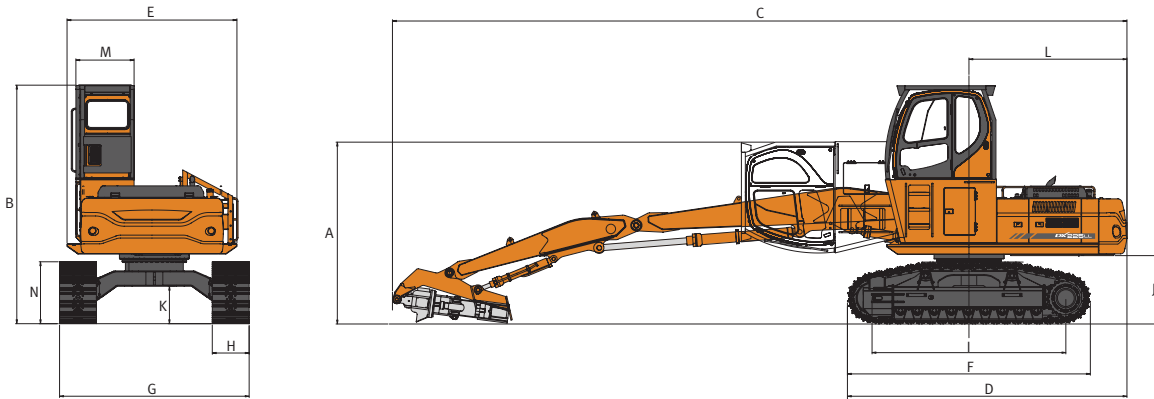
BOOM	20' 2" (6,150 mm)	
ARM	12' (3,660 mm)	
GRAPPLE	NONE	
SHOE WIDTH (DOUBLE GROUSER)	OPERATING WEIGHT	GROUND PRESSURE
2' 4" (700 mm)	65,035 lb. (29,500 kg)	8.39 psi (0.58 bar)

HYDRAULIC CYLINDERS

The piston rods and cylinder bodies are made of high-strength steel. A shock absorbing mechanism is fitted in all cylinders to ensure shock-free operation and extend piston life.

LOG LOADER FRONT		
CYLINDERS	QUANTITY	BORE x ROD DIAMETER x STROKE
BOOM	2	5.5" x 3.7" x 3' 9" (140 x 95 x 1,143 mm)
ARM	1	6.5" x 4.5" x 4' 9" (165 x 115 x 1,454 mm)
HEEL	1	4.5" x 3.0" x 3' 0" (115 x 75 x 915 mm)
EXCAVATOR FRONT		
CYLINDERS	QUANTITY	BORE x ROD DIAMETER x STROKE
BOOM	2	4.9" x 3.3" x 4' 2" (125 x 85 x 1,260 mm)
ARM	1	5.5" x 3.9" x 4' 9" (140 x 100 x 1,450 mm)
BUCKET	1	4.7" x 3.1" x 3' 6" (120 x 80 x 1,060 mm)

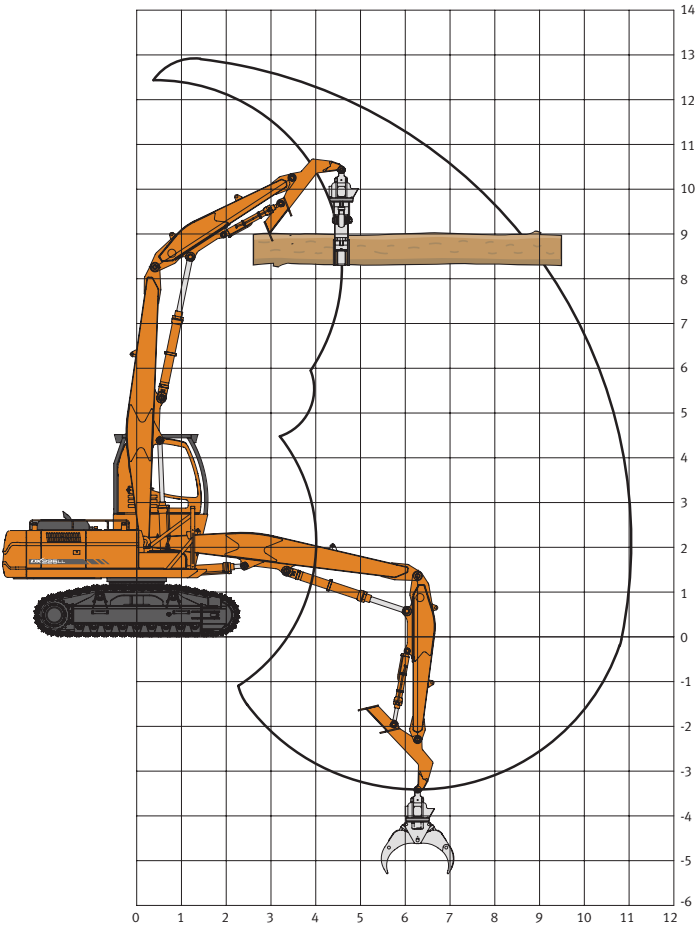
DIMENSIONS



BOOM TYPE		20' 2" (6,150 mm) Log Loader Boom
ARM TYPE		12' (3,660 mm) Log Loader Arm
GRAPPLE		None
SHOE TYPE		Double Grouser
OVERALL TRANSPORT HEIGHT W / ATTACHMENT	A	11' 4" (3,453 mm)
OVERALL HEIGHT	B	14' 10" (4,530 mm)
OVERALL LENGTH	C	45' 8" (13,947 mm)
OVERALL LENGTH (WITHOUT ATTACHMENT)	D	17' 5" (5,308 mm)
WIDTH OF UPPER STRUCTURE	E	10' 7" (3,226 mm)
TRACK OVERALL LENGTH	F	15' 2" (4,613 mm)
TRACK OVERALL WIDTH	G	11' 10" (3,600 mm)
TRACK SHOE WIDTH	H	2' 4" (700 mm)
TUMBLER DISTANCE	I	12' 1" (3,680 mm)
COUNTERWEIGHT CLEARANCE	J	4' 3" (1,299 mm)
MINIMUM GROUND CLEARANCE	K	2' 4" (711 mm)
TAIL SWING RADIUS	L	9' 10" (3,000 mm)
CABIN GUARD WIDTH	M	3' 8" (1,105 mm)
TRACK HEIGHT	N	3' 10" (1,176 mm)

DX225LL

WORKING RANGE



MAX. LOADING REACH	36' 2" (11,035 mm)
MAX. LOADING DEPTH	11' 1" (6,110 mm)
MAX. LOADING HEIGHT	42' 5" (12,920 mm)
REAR SWING RADIUS	9' 10" (3,000 mm)
MIN. SWING RADIUS	13' 8" (4,155 mm)



STANDARD EQUIPMENT

ENGINE

Doosan DL06:

- Turbo charged and After Cooled

Electronically Controlled Common Rail Direct Injected

359 cu.in, 6 Cylinder

148 hp Net Flywheel Horsepower @1,900 rpm (SAE J1349)

Automatic Deceleration System

Equipped with the Fuel Pre-Filter with Water Separator & Built-In Priming Pump

Radiator Reserve Tank

Large capacity Double Element Air Cleaner with Evacuator

Electronic Engine Speed Control

Engine Overheat and Low Oil Pressure Prevention System

HYDRAULIC SYSTEM

Pilot Operated Control Valves, (9) Spools

Main Pump Tandem Variable Axial Piston Type:

- Max. Flow: 2 x 58.2 US gpm. Max. System Pressure: 4,978 psi

Pilot Circuit, Gear Type Pump:

- Max. Flow: 1 x 6.9 US gpm. Max. System Pressure: 569 psi

Swing Motor, Axial Piston Type:

- Max. System Pressure: 3,911 psi

Swing Speed Control up to 11.7 rpm

Spring Set, Hydraulic-Released Parking Brake

Travel Motor, Axial Piston Type, Automatic 2-Speed Control

Travel Speed (High / Low), 2.9 mph / 1.7 mph

In-Shoe Design, Oil Disc Parking Brakes

Cross Sensing Pump Control for Fuel Saving

Two Operating Modes, Two Power Modes

Button Control of Flow in Aux. Equipment Circuits

Computer-Aided Pump power Control

e-EPOS (Electronic Power Optimizing System) Controller

CAB

Steel, All Weather Sound Suppressed Type

Lights:

- (4) Front Cab
- (2) rear Cab

4' Cab Riser w/Guarding and Hydraulic Tilt

Automatically Controlled Air Conditioner with Heat

Multi-Function Color LCD Monitor Panel

Cigarette Lighter with Ashtray

Door Locks

Front Windshield Wiper with Washer

Radio:

- AM/FM Stereo with Cassette
- Remote Radio On / Off Switch, Control Volume, Channel Selection

Glass Antenna

12V Power Socket

Cellular Phone Box

Safety Glass, Tinted

Safety Lock Lever

Seat:

- Suspension with Seat Belt (2" Wide)
- Reclining, Height Adjustable
- Adjustable Arm Rests
- Sliding Control Console
- Weight Adjustment Knob

Skylight

Pull Up Type Front Window

Removable Lower Front Window

Sliding Side Windows

Fuel Control Dial

Front Window Air Defroster

Travel Pedals with Hand Levers

Emergency Breakout Tool

Lunch Box with Hot & Cool Air

Joystick Lever with 3 Switches

Cup Holder

Room Light

Serial Communication Port for Laptop PC Interface (DMS)

Viscous Cab Mounts

DX225LL

ELECTRICAL

Alternator: 80 Amp

Battery:

- (2) 12V, 100 Amp Hrs 750 CCA ea.

Starter:

- 24V, 6 kW

Lights:

- Halogen Working Light (2) Machine, (2) Boom

Electric Horn

Alarm Buzzer for:

- Engine Oil Pressure
- Coolant Temperature
- Hour Meter

Electronic Monitor for:

- Engine Coolant Temp. Gauge
- Fuel Gauge
- Hydraulic Oil Temp. Gauge

Multi-function Display for:

- Engine rpm
- Battery Voltage
- Front and Rear Hydraulic Pump Pressure
- Hydraulic Oil Overheating Warning

Fuel Shortage Warning

- Air Filter Clogging Warning
- Pilot Filter Clogging Warning
- Return Filter Clogging Warning
- Digital Clock
- Engine Check Warning Light
- Engine Oil Pressure Warning Light
- Charging Warning Light
- Preheat Light
- Coolant Temp. Warning Light
- Work Light Indicator Light

Operation Modes for:

- Power Mode Select Button
- Flow Rate Control
- Auto Deceleration
- Display Selection

UNDER CARRIAGE

High / Wide Undercarriage: 11' 10" Track Overall Length

28" Ground Clearance

H.D Chain w/28" (700 mm) Double Grouser Shoes, 48 Each Side
Swivel Guard

H.D. Track Guiding Guards (Full Length)

H.D. Top Rollers w/Special Clean-Out Brackets in Place
of Standard Carrier Rollers

Track Rollers:

- (2) Upper, (9) Lower Each Side

H.D Final Drive Motor Guarding

UPPER STRUCTURE

H.D. Mainframe Reinforcement

Full Upper and Front Part of Cabin H.D. Plate Guarding

H.D Catwalks Integral with Upper Plate Guarding

H.D. Side Doors w/Guarding Over Pump & Radiator Doors

OTHER STANDARD EQUIPMENT

Double Element Air Cleaner

Counterweight:

- 10,360 lb. (4,700 kg)

Sealed Pins and Bucket Linkages

Swing Mechanism, Internal Gear and Pinion

Integrated Track Spring and Idler

Centralized Lube Points

Large Handrail

Punched Metal Anti-Slip Plates

Ultra-Hard Wear-Resistant Disc to the Bucket Pivot

Engine Restart Prevention System

Self-Diagnostic System

Manuals:

- Parts and Operator's

GPS with 1 Year Subscription



OPTIONAL EQUIPMENT

FRONT – FACTORY INSTALLED

Doosan 36' Log Loading Front with Live Heel

ADDITIONAL OPTIONS – FACTORY INSTALLED

Boom Cylinders (Pair) for Excavator Front

GEITH COUPLERS – DEALER INSTALLED

Hydraulic Quick Coupler

Manual Quick Coupler

GEITH THUMBS – DEALER INSTALLED

Hydraulic Pro Link Thumb

Mechanical Thumb

ADDITIONAL OPTIONS – DEALER INSTALLED

3" Seat Belt

Vandalism Covers

DX225LL

NOTES

A large grid of graph paper for taking notes, consisting of 20 columns and 30 rows of small squares.



LIFTING CAPACITY

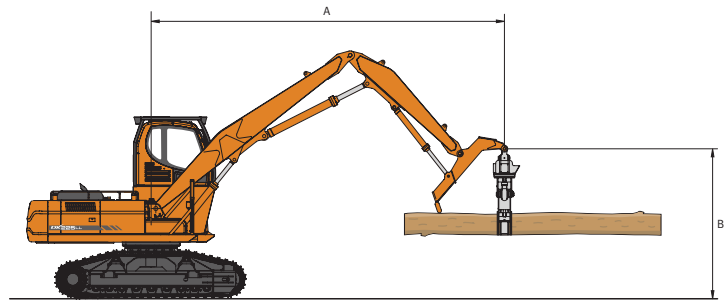
Boom: 18'8" (5,700 mm)

Arm: 9'6" (2,900 mm)

Grapple: None

Shoe: 2'4" (700 mm)

Counterweight: 5.18 ton (4.7 metric ton)



Feet

Unit: 1,000 lb.

B (ft)	A (ft)		5		10		15		20		25		MAX. REACH		A (ft)
	Rating Over Front	Rating Over Side or 360 degree	Rating Over Front	Rating Over Side or 360 degree	Rating Over Front	Rating Over Side or 360 degree	Rating Over Front	Rating Over Side or 360 degree	Rating Over Front	Rating Over Side or 360 degree	Rating Over Front	Rating Over Side or 360 degree	Rating Over Front	Rating Over Side or 360 degree	
25													9.34*	9.34*	21.05
20													8.77*	8.77*	24.53
15									12.15*	12.15*	11.48*	11.48*	8.69*	8.69*	26.63
10							18.39*	18.39*	14.23*	14.23*	12.40*	12.15	8.97*	8.97*	27.67
5							22.37*	22.37*	16.32*	16.22	13.46*	11.9	9.64*	9.64*	27.77
0 (GROUND)													10.86*	10.63	26.93
-5	16.63*	16.63*	25.49*	25.49*	24.73*	23.85	18.20*	15.77	13.75*	11.73			13.11*	11.7	25.07
-10	27.48*	27.48*	33.26*	33.26*	23.12*	23.12*	16.97*	15.93					14.91*	14.14	21.91
-15			26.15*	26.15*	18.17*	18.17*							15.65*	15.65*	16.70

Metric

Unit: 1,000 kg

B (m)	A (m)		1		2		3		4		5		6		7		8		MAX. REACH		A (m)	
	Rating Over Front	Rating Over Side or 360 degree	Rating Over Front	Rating Over Side or 360 degree	Rating Over Front	Rating Over Side or 360 degree	Rating Over Front	Rating Over Side or 360 degree	Rating Over Front	Rating Over Side or 360 degree	Rating Over Front	Rating Over Side or 360 degree	Rating Over Front	Rating Over Side or 360 degree	Rating Over Front	Rating Over Side or 360 degree	Rating Over Front	Rating Over Side or 360 degree	Rating Over Front	Rating Over Side or 360 degree		
7																				4.10*	4.10*	6.91
6															4.97*	4.97*				3.97*	3.97*	7.53
5													5.31*	5.31*	5.15*	5.15*				3.93*	3.93*	7.98
4									6.59*	6.59*	5.89*	5.89*	5.49*	5.49*	5.29*	5.19				3.97*	3.97*	8.27
3								9.78*	9.78*	7.68*	7.68*	6.56*	6.56*	5.91*	5.91*	5.52*	5.13			4.08*	4.08*	8.44
2								11.43*	11.43*	8.71*	8.71*	7.23*	7.23*	6.34*	6.12	5.78*	5.07			4.26*	4.26*	8.49
1								12.48*	12.48*	9.52*	9.52*	7.80*	7.45	6.72*	6.03	6.01*	5.02			4.53*	4.53*	8.41
0 (GROUND)																				4.93*	4.82	8.21
-1																				5.51*	5.09	7.88
-2	8.56*	8.56*	9.77*	9.77*	13.15*	13.15*	12.67*	12.67*	10.11*	9.48	8.33*	7.32	6.98*	5.95						6.44*	5.56	7.39
-3																				6.75*	6.36	6.71
-4																				7.00*	7.00*	5.79
-5																				7.10*	7.10*	4.46

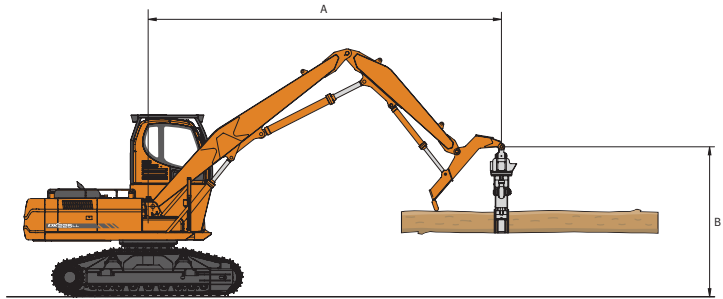
- LOAD POINT IS THE END OF THE ARM.
- CAPACITIES MARKED WITH AN ASTERISK (*) ARE LIMITED BY HYDRAULIC CAPACITIES.
- LIFT CAPACITIES SHOWN DO NOT EXCEED 75% OF MINIMUM TIPPING LOADS OR 87% OF HYDRAULIC CAPACITIES.
- THE LEAST STABLE POSITION IS OVER THE SIDE.
- THE TOTAL MASS OF MACHINE IS 27,000 kg INCLUDED IN THIS MASS BOOM 5.70 m, ARM 2.90 m, 4,700 kg COUNTERWEIGHT, BUCKET WEIGHT 0 kg, ALL OPERATING FLUIDS AND A 75 kg OPERATOR.
- LIFT CAPACITIES ARE IN COMPLIANCE WITH ISO 10567.

Rating Over Front

Rating Over Side or 360 degree

DX225LL

Boom: 20'2" (6,150 mm)
Arm: 12' (3,660 mm)
Grapple: None
Shoe: 2'4" (700 mm)
Counterweight: 5.18 ton (4.7 metric ton)



Feet

Unit: 1,000 lb.

B (ft) \ A (ft)	5		10		15		20		25		30		MAX. REACH		A (ft)
35					24.09*	24.09*							23.41*	23.41*	16.01
30					21.01*	21.01*	18.84*	18.15					17.48*	14.37	22.81
25					20.82*	20.82*	18.30*	18.30*	16.66*	12.76			14.84	11.06	27.03
20					22.49*	22.49*	19.02*	18.14	16.70*	12.77			12.73	9.47	29.81
15	41.77*	41.77*	29.56*	29.56*	25.79*	25.79*	20.51*	17.61	16.83	12.54	12.66	9.43	11.63	8.64	31.56
10			2.30*	2.30*	29.60*	25.98	22.18*	16.92	16.48	12.22	12.54	9.32	11.43	8.48	31.88
5			2.54*	2.54*	31.67*	24.63	22.45	16.28	16.14	11.9	12.4	9.19	11.92	8.84	30.83
0 (ground)			5.22*	5.22*	25.49*	23.98	22	15.87	15.91	11.68			12.68	9.37	29.39
-5					26.96*	23.88	20.73*	15.73	15.84	11.61			15.54	11.41	25.34

Metric

Unit: 1,000 kg

B (m) \ A (m)	2		3		4		5		6		7		8		9		MAX. REACH		A (m)
11			14.11*	14.11*	12.26*	12.26*											11.92*	11.92*	4.22
10					10.64*	10.64*	9.70*	9.70*									9.04*	8.32	5.93
9					10.05*	10.05*	9.14*	9.14*	8.53*	8.47	8.23*	6.5					7.79*	6.31	7.10
8							9.03*	9.03*	8.35*	8.35*	7.85*	6.65					7.09*	5.29	7.96
7					10.30*	10.30*	9.24*	9.24*	8.45*	8.45*	7.83*	6.67	7.16	5.36			6.27	4.67	8.62
6					11.13*	11.13*	9.75*	9.75*	8.74*	8.43	7.98*	6.62	7.16	5.35	5.89	4.39	5.73	4.27	9.13
5			11.46*	11.46*	12.41*	12.41*	10.50*	10.50*	9.19*	8.27	8.23*	6.52	7.11	5.31	5.9	4.4	5.38	4	9.50
4	6.73*	6.73*	18.76*	18.76*	14.02*	14.02*	11.40*	10.65	9.73*	8.07	8.54*	6.4	7.03	5.24	5.87	4.37	5.16	3.83	9.75
3			1.49*	1.49*	15.57*	14.49	12.28*	10.27	10.24*	7.85	8.49	6.27	6.95	5.16	5.82	4.33	5.32	3.95	9.54
2			1.76*	1.76*	6.96*	6.96*	12.89*	9.93	10.52	7.64	8.35	6.14	6.86	5.07	5.78	4.28	5.06	3.75	9.86
1			0.64*	0.64*	5.74*	5.74*	13.07*	9.68	10.34	7.47	8.23	6.03	6.79	5.01	5.74	4.25	5.14	3.81	9.73
0 (ground)			2.21*	2.21*	6.69*	6.69*	12.75*	9.53	10.22	7.36	8.15	5.95	6.73	4.96	5.71	4.22	5.56	4.11	9.18

- LOAD POINT IS THE END OF THE ARM.
- CAPACITIES MARKED WITH AN ASTERISK (*) ARE LIMITED BY HYDRAULIC CAPACITIES.
- LIFT CAPACITIES SHOWN DO NOT EXCEED 75% OF MINIMUM TIPPING LOADS OR 87% OF HYDRAULIC CAPACITIES.
- THE LEAST STABLE POSITION IS OVER THE SIDE.
- THE TOTAL MASS OF MACHINE IS 28,500 kg INCLUDED IN THIS MASS BOOM 6.15 m, ARM 3.66 m, 4,700 kg COUNTERWEIGHT, HEEL WEIGHT 100 kg, ALL OPERATING FLUIDS AND A 75 kg OPERATOR.
- LIFT CAPACITIES ARE IN COMPLIANCE WITH ISO 10567.

: Rating Over Front

: Rating Over Side or 360 degree



OUTPUT DATE 2010-05-18

BRO-DX225LL-TD-2010-05-18

For more information, call 1.888.323.9661,
E-mail InfoNow@dhiac.com or visit www.infracore.com



Doosan Infracore

© 2010 Doosan Infracore America – All rights reserved.